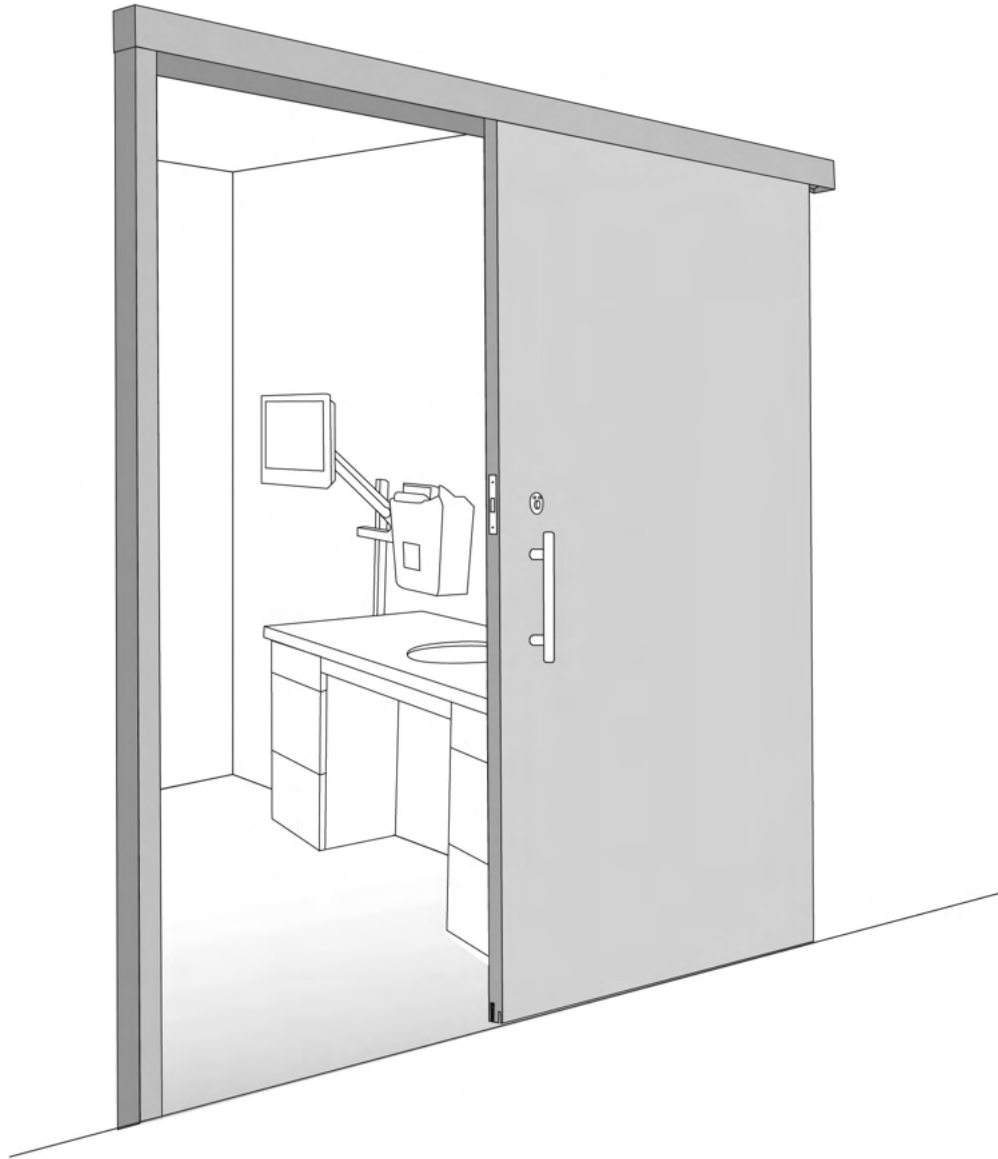


Installation Manual
THE SURFACE SLIDE



Serenity
Sliding Door Systems

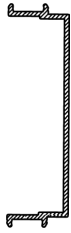
This manual covers installation of the Serenity Sliding Door Systems® Surface Slide System. For information on our other models, please contact us.

(719) 212-6007
Info@SerenitySlidingDoor.com
SerenitySlidingDoor.com

Table of Contents

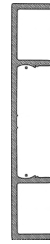
Parts List	4-7
Tools Required	8
Preparation	9
Installation Process	10-18
Step 1: Set the Cased Opening Frame	10-11
Step 2: Install Backer	12
Step 3: Install Track	13
Step 4: Install Receiving Channel	13
Step 5: Install Hanger Brackets and Hang Door	13-15
Step 6: Position the Floor Guide	15-16
Step 7: Install Fascia	17
Step 8: Install Receiving Channel Cover	17
Step 9: Install Handles, Endcaps, and Labels	17-18
Step 10: Verify Stop and Trigger	18
Door Screw Preparation Template	19

PARTS



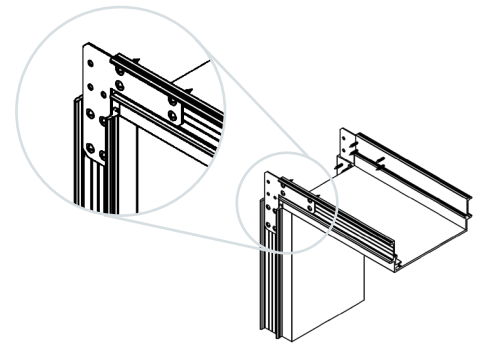
Cased Opening Frame

Wraps rough opening; two legs and Header



2" Snap-On Trim

Provides finished surface along edge of Cased Opening where it meets the wall both sides of frame



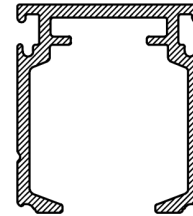
Corner Clips/Corner Detail

Locks in the Header to the vertical leg to maintain proper clearances



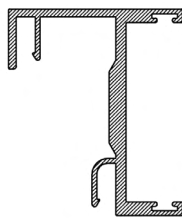
Backer

Attaches to wall along top edge of the full run of the door; supports track



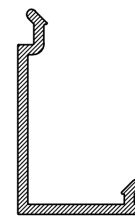
Track

Snaps on to Backer; preloaded with sliding door hardware



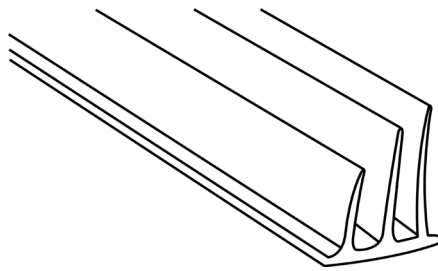
Receiving Channel

Attached to face of frame in the closed position



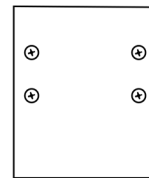
Receiving Channel Cover

Snaps on Receiving Channel to conceal fasteners



Sound Gasket

Adhesive-backed gasket that adheres to back of door for sound separation

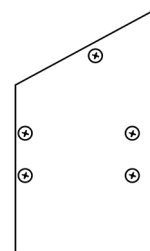
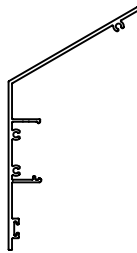


Standard Fascia

Snaps on Track to provide finished product

Standard Endcap

Covers the end of Track and Fascia

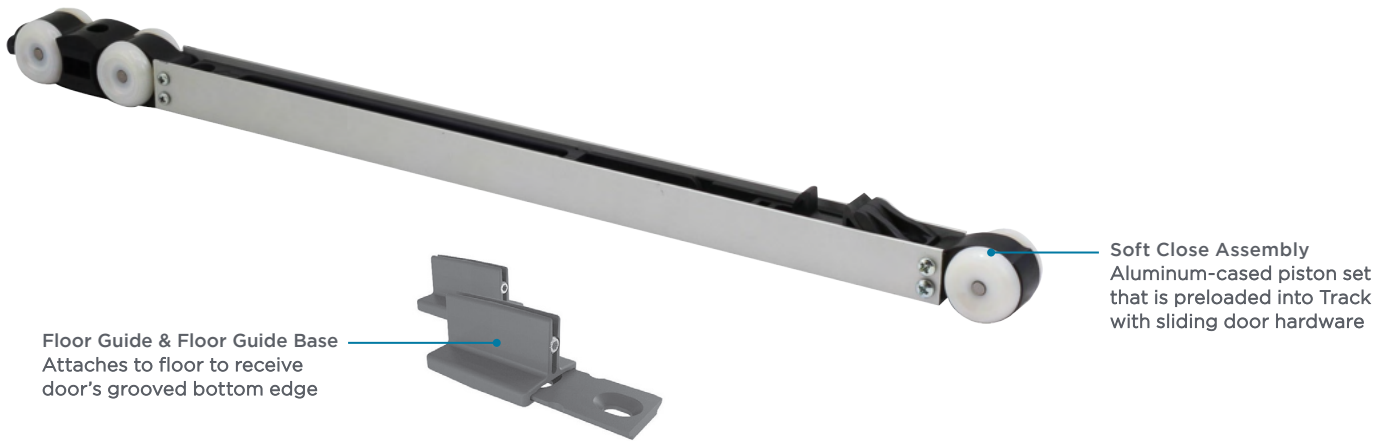


Sloped Fascia (option)

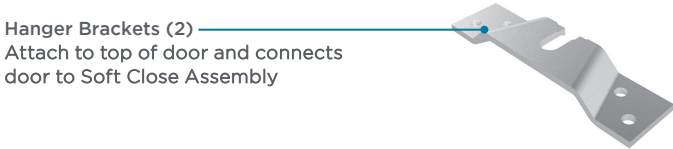
Snaps on Track to provide finished product

Sloped Endcap (option)

Covers the end of Track and Fascia



Part of Soft Close Assembly:



Sliding Door Hardware



(Available upon Request)

Back-to-Back Ladder Handle

Handle for door

Stickers

Logo Sticker for receiving channel & Slide Sticker for wood door

Inventory Parts Received

All products should be inventoried upon receipt. Verify that all parts have been received. Any shortages must be reported to Serenity Sliding Doors in writing. You have five business days from the received date to notify Serenity that parts are missing. No shortages accepted after 5 days.



Backer Screw (Aluminum)

#8 X 2 3/8" PHILLIPS HEAD.
QUANTITY SHIPPED: 8-10

Used to mount Backer to the face of the Cased Opening Frame Header



Backer Screw (Wood)

#9 X 2 1/2" PHILLIPS HEAD.
QUANTITY SHIPPED: 8-10

Used to mount Backer to the wall



Receiving Channel Screw

#12 X 2" HEX HEAD.
QUANTITY SHIPPED: 8-10

Used to secure the Receiving Channel to the Cased Opening Frame Leg



Hanger Bracket Screw

#10 X 1 3/4" HEX HEAD.
QUANTITY SHIPPED: 8-10

Replacement screw to mount door to Hanger Bracket



Strike Screw

#8 X 1/2" PHILLIPS HEAD.
QUANTITY SHIPPED: 2 PER DOOR, IF REQ.

Used to mount strike to Receiving Channel
Used ONLY when there are locks



Endcap Screw

#5 X 5/8" PHILLIPS HEAD.
QUANTITY SHIPPED: 8-10

Used to secure Endcaps to Fascia
and Backer



Backer Shim 2" x 1/2"

QUANTITY SHIPPED: 8-10

Cut-up pieces of Cased Opening Trim used
to shim the space between the top of the
Backer and the wall



Frame Corner Clips/Screws

#6 X 3/8" PHILLIPS HEAD.
QUANTITY SHIPPED: 4 CORNER CLIPS, 16 SCREWS

Used to mount Corner Clips to Cased Opening Frame



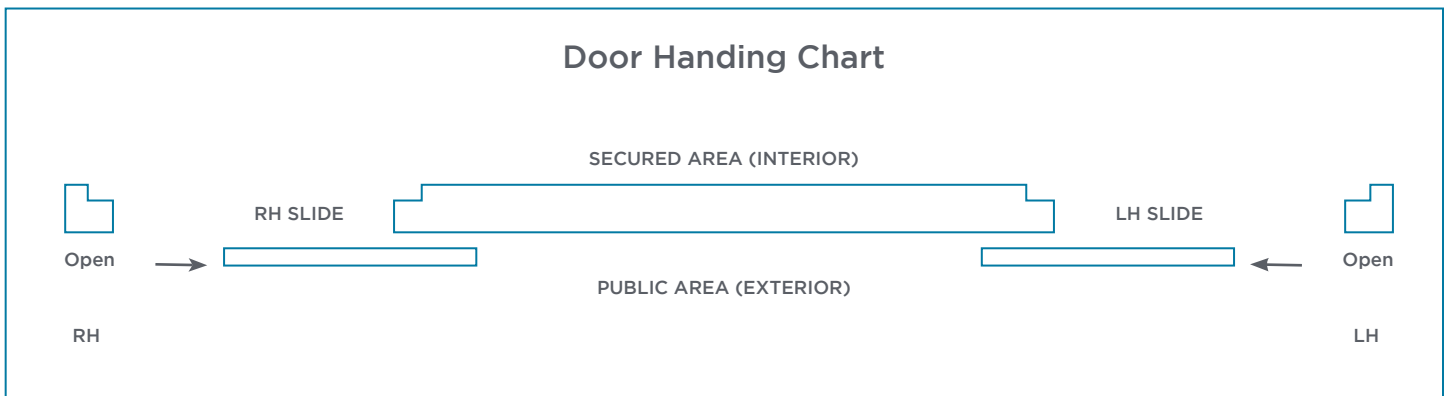
Aluminum Frame Screws

#6 X 1 5/8" PHILLIPS HEAD.
QUANTITY SHIPPED: 30

Used to mount Cased Opening Frame to wall

TOOLS RECOMMENDED

1. 3' Level
2. 6' Level
3. Small Laser Tool
4. Screw Gun and Drill - shaft with #2 insert bit
5. 3/16" Drill Bit
6. 1/4" Drill Bit
7. 1/8" Drill Bit
8. Hex Head: 4" Long, 5/16" Diameter
9. Rubber Mallet
10. 3mm Allen Wrench (for Soft Close triggers)
11. 2.5mm Allen Wrench (for Soft Close stops)
12. #1 Phillips Screwdriver
13. Two 13 mm Open-end Flat Wrenches (no thicker than 1/4")
14. Rotohammer
15. 1/4" Rotohammer Bit
16. Utility knife
17. Ladder
18. Two 12-inch Clamps (if only one person is installing the door)
19. Caulk, caulk gun and additional drill bits may be needed for drilling the face preps on the doors, depending on what hardware is being used. Lock template should be included in lock packaging; if not, contact Serenity.



PREPARATION

A: Verify RO and Backing size.

Verify rough opening size and wood backing per shop drawings.

B: Verify consistency of wall thickness.

Verify consistency of wall thickness. Frames are ordered per approved door submittal and should be consistent with a maximum plus or minus 1/4". We design some flexibility into the doors by typically providing the frame 1/8" wider than the wall callout size on the blueprints. Make sure walls are not flared at the head; wall condition should be consistent within 1/4" plus or minus. If wall conditions are not within these tolerances, please notify the GC and Serenity Sliding Doors or distributor to correct the situation before attempting to install the Cased Opening Frame, to ensure proper installation of the door system.

C: Check sheetrock.

Make sure all sheetrock is cut flush to the stud. Overhanging sheetrock will impede proper installation of the cased opening.

D: Determine installation timing.

Determine if frame is to be set before or after finished flooring. (In any case, the wood door should be set after finished flooring.)

These are your options:

- Frame installed after finished flooring (preferred).
- Frame installed before finished flooring. This is necessary in some cases. For example, if vinyl flooring is to be covered up the wall, the frames need to be set prior to the flooring and a second trip may be required. In such a case, you will need to shim the bottom of the legs/jambes up off the floor to allow for finished flooring thickness.

A note about split flooring: If one side of the door is to be one type of flooring and the other side another, for example, vinyl and carpeting, or even two colors of the same material, position the back edge of the sliding door, not the centerline of the door, at the transition. The proper positioning is shown in the photo at right. When hanging the door, it should be positioned as close to the lower flooring as possible to provide maximum sound protection while still allowing easy opening and closing.

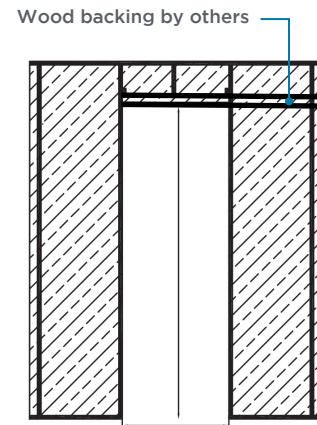


E: Flooring (level).

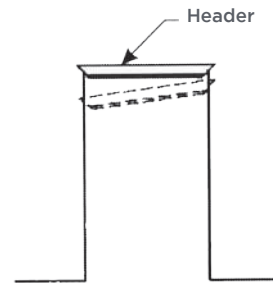
Verify existing floor is level along the full run of the door (can be verified by Track length). If floor is out of level by more than 3/8" along that distance, possible issues include sound attenuation being lost and proper door functioning being inhibited.

STEP 1: SET THE CASED OPENING FRAME

A: Check the dimensions and square of the rough opening. Verify correct cased opening width per shop drawings. Make sure the wall is the proper height and width for the frame and is within tolerance.

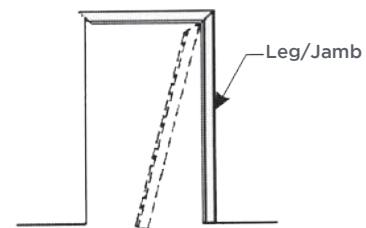


B: Hold the Cased Opening Header along the top edge of the rough opening and center it in the RO. Then wrap it on over the wall.

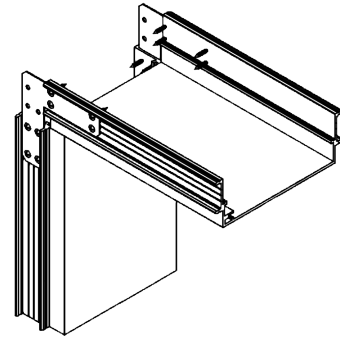


C: Hold one of the Legs/Jambs at an angle and slip the upper portion over the wall. Push upward to engage the Leg/Jamb to the header. Then push the rest of the Leg/Jamb over the wall.

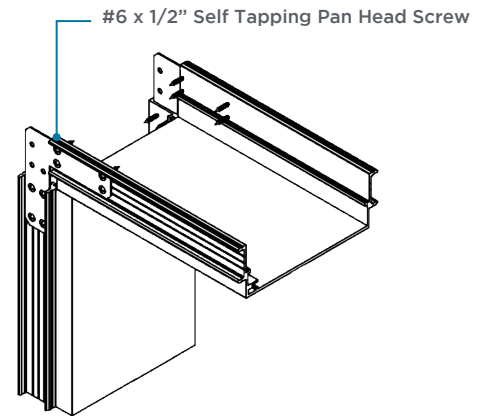
Make sure the bottom of the Leg/Jamb is in contact with the floor, UNLESS you are installing the Frame before flooring has been finished. If installing the Frame before finished flooring, shim the bottom of Legs/Jambs up off the floor to the height of the finished flooring.



D: Install the second Leg/Jamb. If necessary, pull the header down to make contact with the Legs/Jambs. Use the four Corner Clips as a guide to help with the alignment of the header and the Legs/Jambs. The header will overlap the Legs/Jambs by approximately 5/8" on each side.



E: Affix the four Frame Corner Clips using #6 x 1/2" self-tapping pan head screws making sure that the header and jamb attain a 90-degree corner.



F: Level the head, plumb the Legs/Jambs, then screw all pieces into place. Use 1 screw every 12 inches.

G: Attach Snap-On Trim on all three pieces of the frame, starting with the top. File down excess head trim. It may be necessary to use a rubber mallet. Do not hit the face. Align corners at a 90 degree angle.

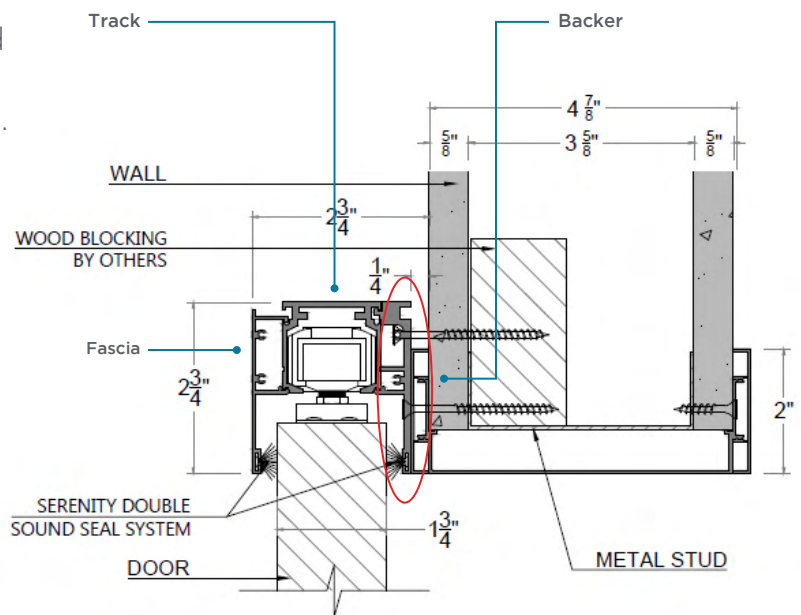
TIPS

- Don't cut frame or you'll be cutting the door.
- File down excess head trim.

STEP 2: INSTALL BACKER

A: Align the Backer on the face of the 2" header Snap-On Trim. The Backer should be positioned to the edge of the Frame Leg Trim and bottom of the Header Trim. Use a quick clamp to hold it if necessary.

B: Predrill and use the provided Backer Screws to secure the Backer onto the face of the Cased Opening, starting with the bottom holes. The self-tapping Backer Screws (Aluminum) are used on the lower part of the Backer. Use the other Backer Screws (Wood) for the remaining top holes of the Backer.



C: Slip the Filler Trim behind the section of Backer where there is a gap between the wall and Backer, flush with the bottom of Filler Trim and Backer. Drill pilot holes ($3/16"$), using the existing holes in the Backer as guides, through the Filler Trim before attempting to screw in the Backer Screws.

D: Use the Backer Screws to hold both the Backer and the Filler Trim in place. If the Filler Trim is short, push it flush with the side opposite of the opening. Do not screw in the top screws until all the bottom ones are secured. Before tightening the top screws, put $3/8"$ Backer Shims behind the top of the Backer, next to each of the screws. This prevents the tightening of the screws from warping the shape of the Backer.

TIPS

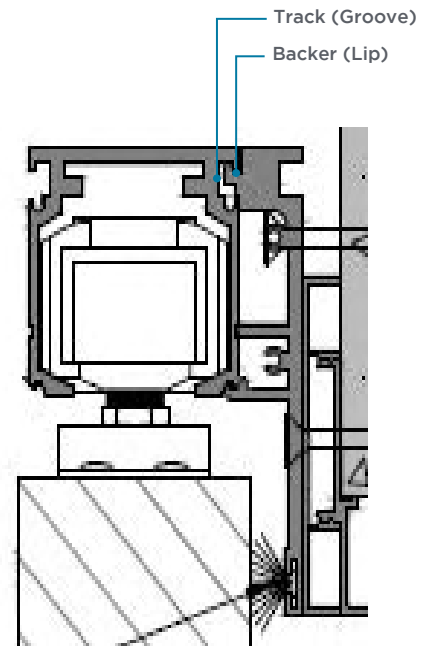
- Self-drilling screws are used on lower part of Backer that goes into the cased opening frame only. Use wood screws on the remainder of the Backer.
- Have solid side of Filler facing Backer.
- Use shims for top screws of Backer.
- Any gap involving filler should be next to frame.

STEP 3: INSTALL TRACK

A: Snap in the Track. You may need a rubber mallet to do this. Hold the Track at a 45-degree angle to the Backer so that the groove at the top of the Track is positioned to roll into a lip in the Backer (see drawing). Using the rubber mallet, hit the Track at the top of the face to snap into place. Hitting the Track at the bottom of the face, or with too much force, will warp it and may cause the Wheel Sets to malfunction. Start on one end and work your way to the other.

TIPS

- When putting Track onto Backer, do not hit lower part of track face with mallet (track will bend).

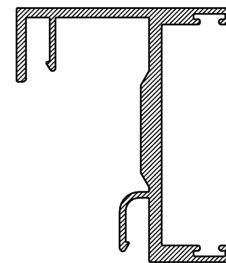


STEP 4: INSTALL RECEIVING CHANNEL

A: Raise the Receiving Channel up to the bottom of the Backer and shim underneath in necessary. Hold the pre-drilled Receiving Channel flush with the face of the cased opening leg/jamb and secure with self-tapping Receiving Channel screws.

TIPS

- Pre-drill Receiving Channel Holes into Trim prior to installing screws.

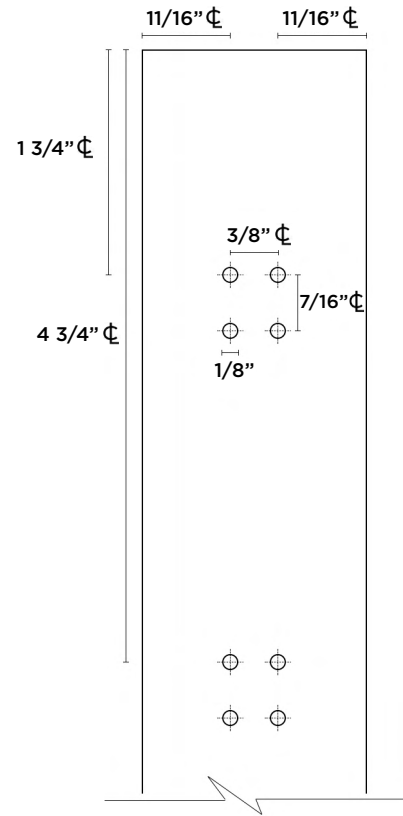


STEP 5: INSTALL HANGER BRACKETS AND HANG DOOR

A: Hanger bracket holes should be predrilled on the doors from Serenity. Use predrilled holes to mount brackets.

A.1: If holes are not predrilled from factory, use the “Door Screw Template” provided. Set the Door on the floor along one long edge. Note that the bottom edge of the door has a groove in it. Starting at one corner that will be an upper corner of the door, measure along the top edge of the door. Do the same on the opposite end of the top edge for the second Hanger Bracket.

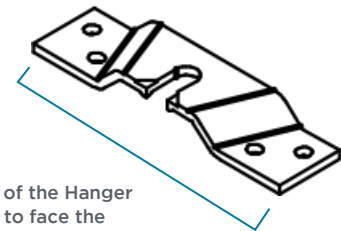
(Scale Template included at the back of this Manual.)



B: Center the Hanger Bracket on your mark. Double-check that the Hanger Bracket is centered in the 1 3/4” thickness of the door. Use the provided Hanger Bracket Screws to secure the Hanger Bracket. It is important to note the handing of the door so that the open face of the Hanger Bracket will face the cased opening / wall when the door is hung.

TIPS

- Center the Hanger Bracket in the 1 3/4” thickness of the door.



The open face of the Hanger Bracket needs to face the Cased Opening/Wall when the Door is hung.

C: Place the adhesive-backed gasketing 1/4” in. along the back edge of door that faces wall. Be sure the largest fin is closest to the edge of the door. Do not stretch the gasketing as you place it or it will fall off later.

D: Lift the door up to the Hanger Bolts and slide the bolts into the Hanger Bracket.

E: “Reveal” or align the door, adjusting the height of each Hanger Bracket Bolt as needed. The door needs to be plumb with the Receiving Channel and centered between the strips of felt at both sides of the channel. Double-check the bottom clearance: make sure the bottom of the door is not too low or too high off the floor—1/4” to 3/8” from the floor is optimal. The door needs to be as low to the ground as possible, with just enough clearance for the Floor Guide Channel.

NOTE:
Do this step after finished flooring is in place.

F: When the door is in alignment, tighten the Hanger Bolts pushing the door towards the frame seals.

STEP 6: POSITION THE FLOOR GUIDE



Floor Guide Components

A: With the door in the closed position, all the way inside the Receiving Channel, mark the floor for positioning the Floor Guide Channel. To do this:

- Mark on the floor at the back edge of the door (i.e., the end of the door not in the Receiving Channel), just below the center of the groove visible at the door’s bottom edge.
- Barely open the door a couple of inches out of the Receiving Channel.
- Swing the door out at an angle to the wall, wedging your rubber mallet between the door and the jamb/leg trim to hold the door out of the way.
- Standing behind your mark on the floor, use your laser to shoot a straight beam along the floor over the dot and into the center of the Receiving Channel. Trace the 2” of laser line that is right in front of the jamb/leg trim.

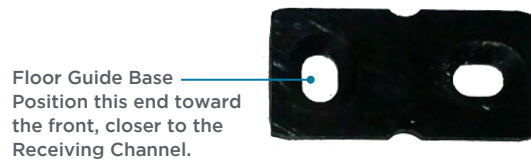
NOTE:
Doors with automatic door bottoms require a different technique. Contact Serenity for instructions.

B: Position the Floor Guide Base in the path of the laser lined up with the beam. Mark the position of the screw holes on the flooring, then drill with a 1/4" rotohammer drill bit. Insert the Floor Guide Anchors into the holes.

TIPS

- Skinny Floor Guide Channel with small set screw.
- 1/4" x 12" rotohammer bit.

C: Place the base over them with the more horizontal hole positioned at the front, closer to the receiving channel. (This will make it easier to make slight adjustments later). Screw the Floor Guide Base to the floor.



D: Before positioning the Floor Guide Channel, insert the small Allen screw (set screw) in one end of the channel, as shown. Screw it in with a 2 mm Allen wrench until the outside of the screw is flush with the edge of the guide. This makes the guide slightly wider so the door won't have too much play.



E: Remove the mallet that was wedged in at the center of the door to hold the door out at an angle.

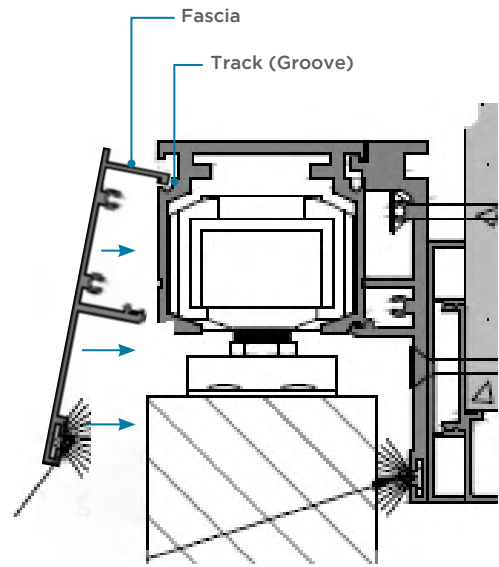
F: Slide the door closed, then slide the Floor Guide Channel into place over the Floor Guide Base. Position the Channel with the Allen/set screw facing toward the back of door.

STEP 7: INSTALL FASCIA

A: Hold the Fascia at a 45-degree angle to the Track so that the lip of the Fascia is positioned to roll into a groove on the Track, as shown. Snap the Fascia onto the Track.

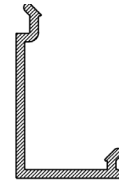
TIPS

- Have door open when putting on Fascia.



STEP 8: INSTALL RECEIVING CHANNEL COVER

A: Snap on the Receiving Channel Cover. Use a mallet to tap it into position. Make sure the Receiving Channel and the Receiving Channel Cover are even at the top.



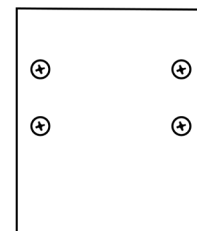
STEP 9: INSTALL HANDLES, ENDCAPS AND LABELS

A: Install the Back to Back Ladder Handle.



B: Screw Endcaps onto both ends of the track system securing the Backer to Fascia. The Endcaps should be flush.

The Endcap should be tight to the side of the cased opening, with no gap, and flush with the bottom of the Header.



C: If the door has locking hardware you may need to drill the face prep on the door. This will vary by lock and we will provide a template. Install the lock into the door and extend the bolt. Line up the strike plate with the receiving channel strike prep and mark its correct position in relation to the bolt. Mark the strike prep holes then drill them with a 1/8" drill bit. Using the strike screws that we provided secure the strike plate & dust box to the Receiving Channel and verify that the lock engages. Follow instructions for locks provided. Check submittal for location and application.

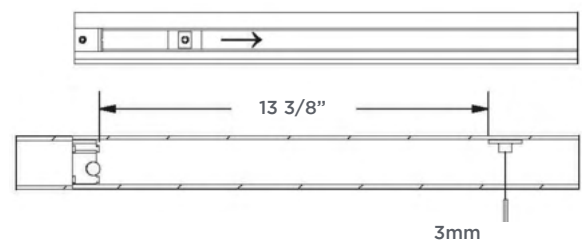
D: Finally, place the Serenity logo sticker inside the top of the receiving channel and the Slide sticker above the Lock Cylinder / Ladder Pull. Applying the stickers in this way is part of your warranty.

(*Slide Sticker is Optional, and Available upon Request)



STEP 10: VERIFY STOP AND TRIGGER

A: Close door until it barely touches the Receiving Channel. It should measure 13 3/8" from the edge of the Stop to the edge of the Trigger. This is a critical measurement to ensure proper functioning of the Soft Close Assembly. Overextension of the Soft Close Assembly can cause it to fail. Make final adjustments if necessary.



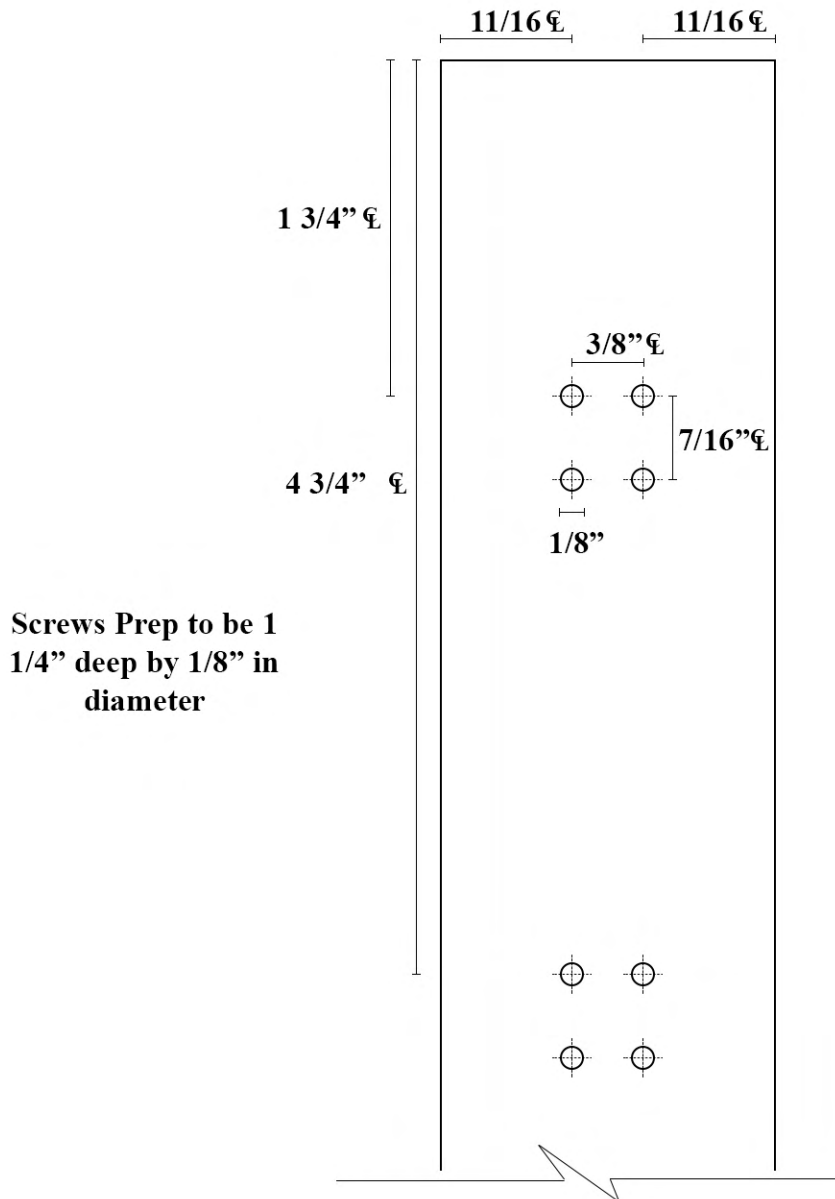
Close Side: Verify the rollers are touching the stop when the door is fully closed - then verify trigger distance.

Open Side: Verify Door hangs into opening 4 1/2" - 5" when the rollers are touching the stop - then verify trigger distance.



Serenity
Sliding Door Systems

Door Screw Prep Template



Prep to be performed on both ends of the door